

SiZer™ DNA Markers

DESCRIPTION

- iNtRON supplies a wide range of products for accurate size and mass estimations (quantitation) of nucleic acid fragments. Nucleic Acid Markers are available for sizing linear, or supercoiled DNA and single-stranded RNA fragments. A variety of these markers are available in the ready-to-use SiZer™ formats.
- SiZer™ DNA Markers are ideal for determining the size of double-stranded DNA from 60~10,000bp base pairs. The SiZer™ DNA Markers consist of 7 ~ 15linear double-stranded DNA fragments. Several fragments are present at increased intensity to allow easy identification. All fragments are precisely quantified and mixed during the production.
- For 5 µl loading, all fragments except typical band DNA fragments are 40 ng. The typical band of DNA fragments is 100 ng. These ladders are pre-mixed with loading dye and are ready to use.
- All DNA Markers can be stained with RedSafe™ Nucleic Acid Staining Solution, ethidium bromide (EtBr) or other DNA stains.

CHARACTERISTICS

- Ideal for determining the size of DNA
- Ready to use without any handlings

KIT CONTENTS

Product	Contents	Cat. No
SiZer™-100 DNA Marker	0.5 ml	24073
SiZer™-1000 DNA Marker	0.5 ml	24074
SiZer™-1000 plus DNA Marker	0.5 ml	24075

STORAGE AND STABILITY

- Storage** : SiZer™ DNA Markers can be stored under - 20°C.
- Stability** : Stable for up to 24 months at - 20°C

GENERAL USE

- No DNase and RNase detected.
- Load 5 µl per each well of Agarose gel.

PRODUCT WARRANTY AND SATISFACTION GUARANTEE

- All products are undergone extensive quality control test and are warranted to perform as described when used correctly.
- Immediately any problems should be reported.
- Satisfaction guarantee is conditional upon the customer providing full details of the problem to iNtRON within 60 days, and returning the product to iNtRON for examination.

QUALITY CONTROL

- Well-defined bands are formed during agarose gel electrophoresis.
- The DNA concentration is determined spectrophotometrically.
- The absence of nucleases is confirmed by a direct nuclease activity assay.

PRODUCT USE LIMITATION

- This product is developed, designed and sold exclusively for research purposes and in vitro use only.
- The product was not tested for use in diagnostics or for drug development, nor is it suitable for administration to humans or animals.

NOTICE BEFORE USE

- Do not heat before loading.
- For quantification, adjust the concentration of the sample to equalize, it approximately with the amount of DNA in the nearest band of the ladder.
- Visualize DNA by staining RedSafe™, ethidium bromide (EtBr) or other DNA stains.

DETAIL INFORMATION

	SiZer™-100	SiZer™-1000	SiZer™-1000 plus
Size range (bp)	100-1500	250-10000	100-10000
Conc. (ng/ul)	100	120	144
Typical bands	100ng/5ul	100ng/5ul	100ng/5ul
Other bands	40ng/5ul	40ng/5ul	40ng/5ul
Loading Vol	5ul	5ul	5ul
Band number	11	12	15
Contents	100,200,300,400, 500 ,600,700,800, 900,1000,1500	250,500,750, 1000,1500, 2000 , 3000,4000, 5000 , 6000,8000,10000	100,200,300,400, 500 ,700,1000, 1500,2000, 3000 , 4000,5000,6000, 8000,10000

RUO

REF 24073 / 24074 / 24075



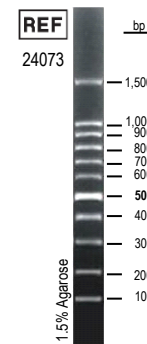
RELATED PRODUCTS

Product Name	Cat. No
RedSafe™ Nucleic Acid Staining Solution (20,000x)	21141
DNA-spin™ Plasmid DNA Extraction Kit	17096/17098
MEGAquick-spin™ Total Fragment DNA Purification Kit	17290
Maxime™ PCR PreMix (i-StarTaq)	25165
Maxime™ PCR PreMix (i-pfu)	25185

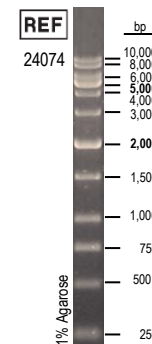
ELECTROPHORESIS

- The 5 µl of ladder DNA was loaded, and then electrophoresed for 1hr at appropriate concentration of gel

SiZer™-100



SiZer™-1000



SiZer™-1000 plus

